

# Developing a Multi-omic Toolbox for Personalised Medicine

## CONSORTIUM

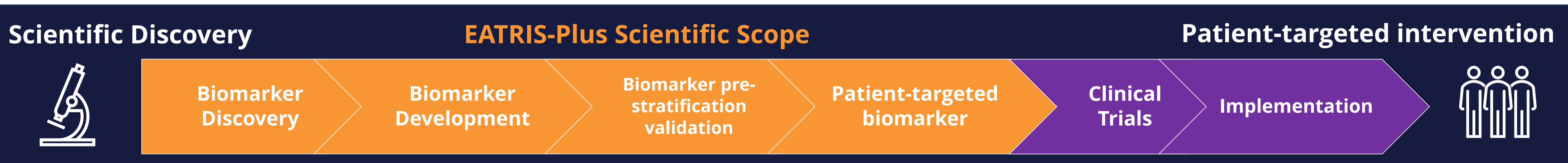
1. EATRIS-ERIC, The Netherlands
2. Palacký University Olomouc, Czechia
3. Madrid Health Service, Spain
4. University of Helsinki, Finland
5. Luxembourg Institute of Health/ Integrated Biobank Of Luxembourg, Luxembourg
6. Radboud University Medical Centre, The Netherlands
7. University of Ljubljana, Slovenia
8. Trinity College Dublin, Ireland
9. Riga Stradins University, Latvia
10. Uppsala University, Sweden
11. Technical University of Munich, Germany
12. European Patients' Forum, Luxembourg
13. Vall D'Hebron Research Institute, Spain
14. CEA-NeurATRIS, France
15. Italian National Institute of Health, Italy
16. University Of Oslo, Norway
17. BIOCAT, Spain
18. INFARMED, Portugal
19. Sofia University, Bulgaria
20. University of Zagreb School of Medicine, Croatia

Coordinated by the European Infrastructure for Translational Medicine (EATRIS)

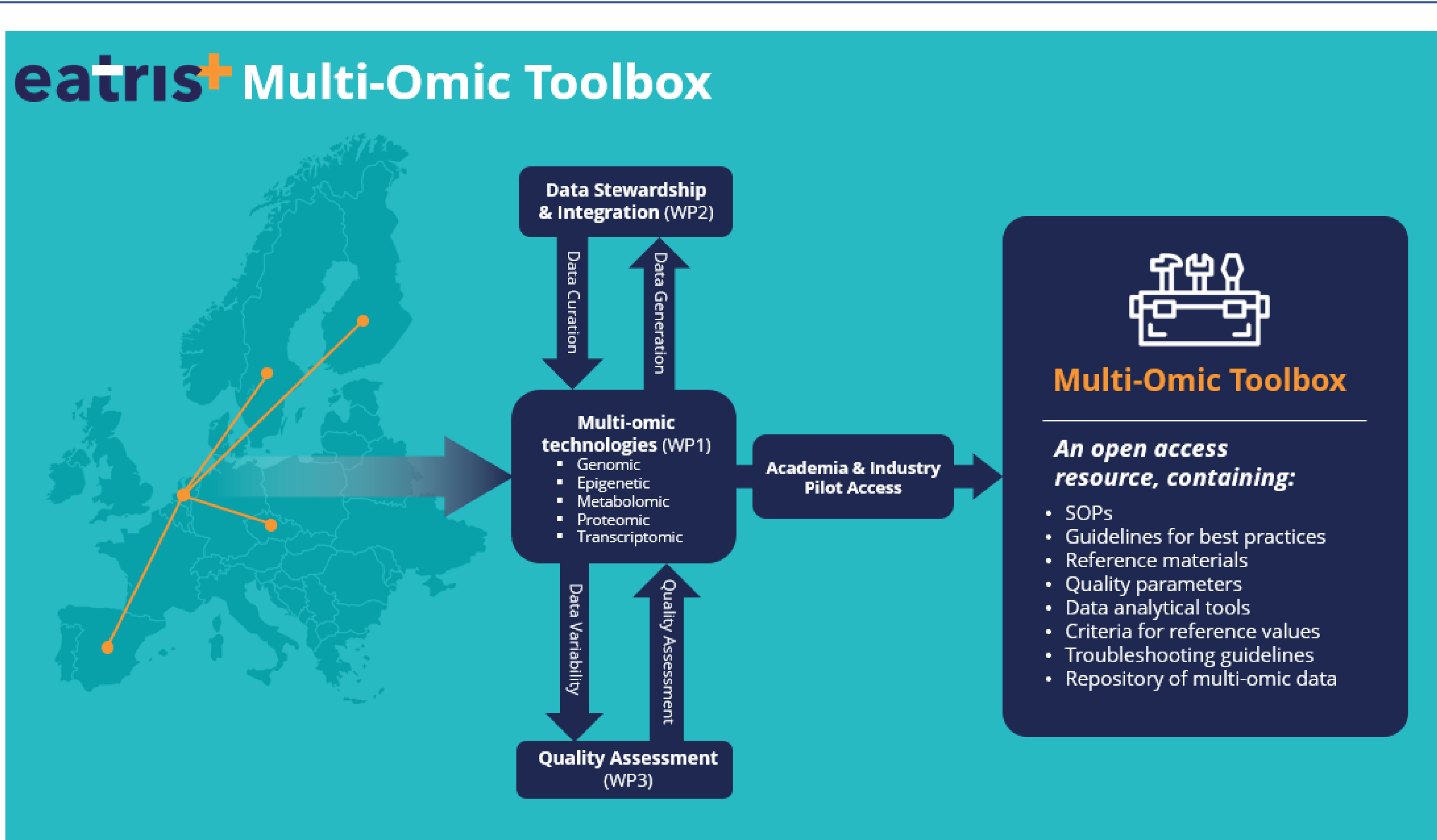
## OBJECTIVES

Enhancing EATRIS' long-term sustainability by maturing key capacities of the infrastructure and offering access to scientific tools and services to support personalised medicine.

- Providing access to infrastructure tools and resources, including novel academia-industry collaboration models
- Further strengthen EATRIS' operational practices and financial performance
- Driving patient empowerment through active involvement in the research process
- Building lasting partnerships with key stakeholders in the translational medicine field to facilitate the progress of personalised medicine



## SCIENTIFIC TOOLS DEVELOPMENT & ACTIVITIES



## WORKSHOPS & TRAINING

### Annual EATRIS Summer Schools

- May 23-26, 2022 – Lisbon, Portugal
- Aimed at academics, health care professionals and industry participants

### Workshops Best Practices in Public-Private Collaboration

- Two-day workshop in September 2022
- Lectures
- Team exercises and case studies
- Aimed at researchers, TTO staff, SME based professionals

### Staff Exchange Programme

- Aim to foster a shared culture of research and innovation,
- Supporting individual learning and best practice and knowledge exchange
- Up to 1500 EUR support grants

## COHORT

- Established cohort of **1,109 healthy individuals** in Czechia upon whom **genomic sequencing** has been already performed.
- **Biological material and specific consent** are already available to the EATRIS-Plus consortium for performing **additional omic studies** in a **sub-cohort of ~100 samples**.
- Creation an **open repository** of reference values (age and gender stratified), **accessible to the research community as part of the multi-omic toolbox** and meant to grow with additional multi-omic data.

## ANALYSIS STATUS

-Omic	Technology	# samples received	# samples that passed QC	# samples analysed
Epigenomic	DNA Methylation EM-seq	125	125	125
Transcriptomic	RNA sequencing	128	95	95
Transcriptomic	miRNA sequencing	128	ongoing	ongoing
Transcriptomic	miRNA qRT-PCR	128	81	100
Proteomic	LC-MS/MS	128	128	128
Metabolomic	LC-MS untargeted and targeted	128	128	128

## EATRIS CERTIFICATE OF COMMITMENT TO QUALITY (ECCQ)

- To emphasize the **importance of research quality and scientific rigor**.
- To **increase visibility of certified sites** and support communication of quality services to users.

